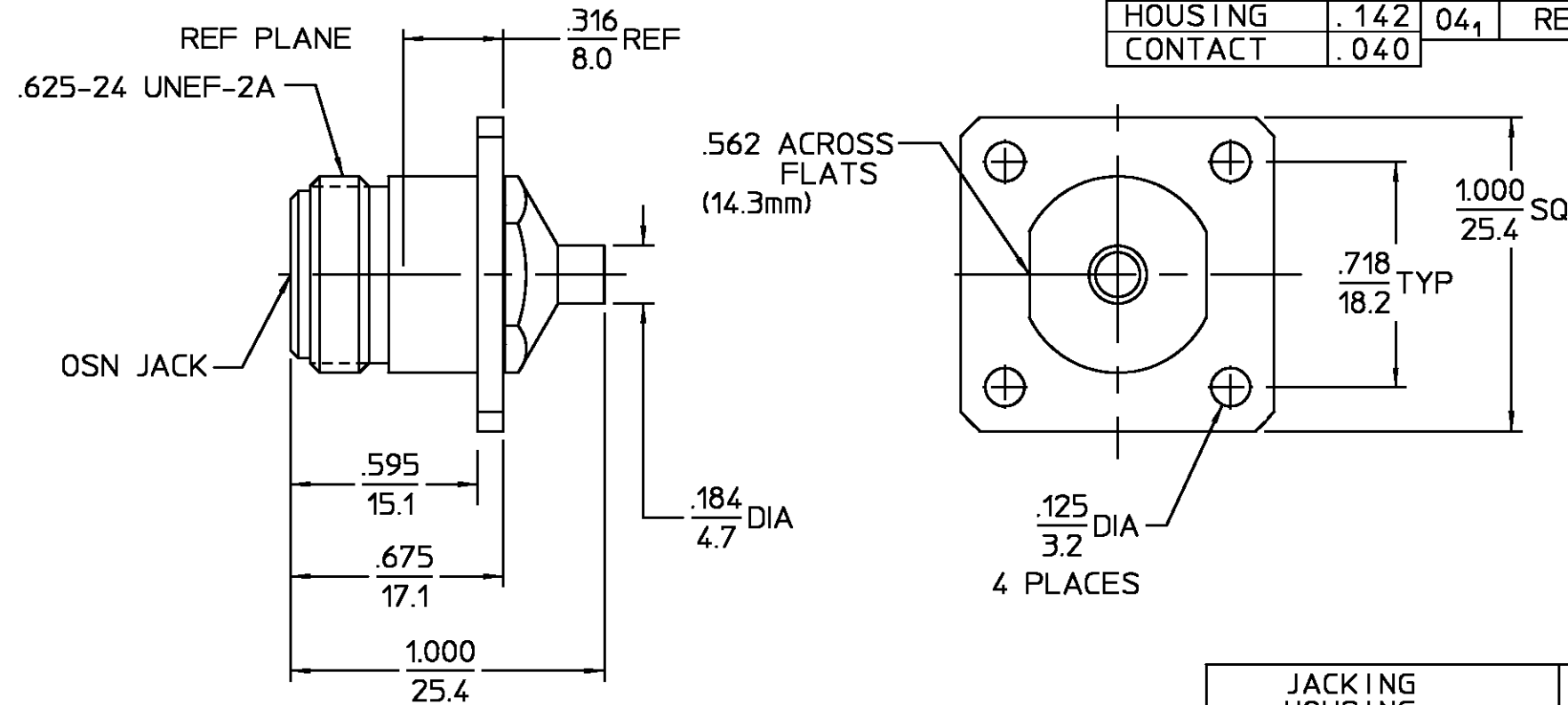


CABLE ENTRY DIAMETER MINIMUM DESIGNED FOR USE WITH RG 402/U (141) CABLE	
HOUSING	.142
CONTACT	.040

REVISIONS			
REV	DESCRIPTION	DATE	APPROVED
04 ₀	REVISED	12/11/95	<i>J. Cornello</i>
04 ₁	REVISED MATERIAL/FINISH, ECN 97-0001	4/3/97	<i>S. Morby</i>



ELECTRICAL	MECHANICAL	ENVIRONMENTAL
Nominal Impedance (Ohms) <u>50</u>	Interface Dimensions MIL-STD-348A, Fig. <u>304-2</u>	Temperature Rating <u>-55°C TO 125°C</u>
Frequency Range (GHz) <u>DC to 10</u>	Recommended Mating Torque <u>12 TO 15 in/lbs</u>	Vibration MIL-STD-202, Method <u>204, Condition B</u>
Volt Rating (VRMS MAX) @ Sea Level <u>1000</u>	Mating Characteristics: Insertion (MAX Lbs) <u>2.0</u>	Shock MIL-STD-202, Method 213, Condition <u>I</u>
VSWR <u>1.07 + .007 X f(GHz)</u>	Withdrawal (MIN Oz) <u>1.0</u>	Thermal Shock MIL-STD-202, Method 107, Condition B, Except High Temp <u>115°C</u>
Insertion Loss (dB MAX) <u>0.05 √ f (GHz)</u>	Force to Engage and Disengage (In-Lbs MAX) <u>3.0</u>	Moisture Resistance MIL-STD-202, Method 106, Except Step 7b (Vibration) Shall be omitted
RF Leakage (dB MIN @ 2-3 GHz) <u>-90</u>	Center Contact Captivation Axial (Lbs) <u>N/A</u>	Corrosion - MIL-STD-202, Method <u>101, Condition B, 5% salt spray</u>
Corona, 70,000 Ft (VRMS MIN) <u>750</u>	Radial (In-Oz) <u>N/A</u>	
Dielectric Withstanding Voltage (VRMS MIN) @ Sea Level <u>3000</u>	Cable Retention Axial Force (Lbs) <u>60 min</u>	
Contact Resistance (Milliohms MAX) Center Contact <u>2.0</u>	Torque (In-Oz) <u>55 min</u>	
Outer Contact <u>2.0</u>	Weight (Grams) <u>N/A</u>	
Cable to Housing <u>.05</u>		
RF High Potential @ Sea Level (VRMS MIN @ 5 MHz) <u>2500</u>		
IR.(Megohms MIN) <u>5000</u>		

COMPONENT	MATERIAL	FINISH
JACKING HOUSING	STAINLESS STEEL PER ASTM-A484, AND ASTM- A582, TYPE 303	PASSIVATE PER QQ-P-35
HOUSING CABLE ENTRY	BRASS PER ASTM-B-16 HALF HARD	GOLD PLATE PER MIL-G-45204
DIELECTRIC	TFE FLUOROCARBON PER ASTM-D-1457	N/A
CENTER CONTACT	BERYLLIUM COPPER PER ASTM-B196, ALLOY C17300, CONDITION H	GOLD PLATE PER MIL-G-45204

UNLESS OTHERWISE SPECIFIED DIMENSIONS ARE IN INCHES		DRAWN BY <i>JOSEPH DINSMORE</i> DATE <u>12/5/95</u>		AMP Incorporated 140 Fourth Avenue Waltham, MA 02451-7599	
FRAC. ± 1/64	DEC. ± .005	ANGLES ± 1°	APP'D BY <i>J. Cornello</i> DATE <u>12/11/95</u>	AMP	
These drawings and specifications are the property of M/A COM Interconnect Div. and shall not be reproduced or copied or used in whole or in part as the basis for the manufacture or sale of item(s) without written permission.			USE ASS'Y PROCEDURE	TITLE OSN FLANGE MOUNT CABLE JACK-DIRECT SOLDER ATTACHMENT	
			408-04884 NO. AP. (30-073)	SIZE B	CODE IDENT NO. 26805
				3006-7941-00	REV 04 ₁
			SCALE 2 : 1	SHEET 1 OF 1	

CUSTOMER DRAWING

AMP PART # 1057176-1
SHEET 1 OF 1 REV A